

# alignrt<sup>®</sup> Advance

**BREATHKING SPEED.**  
FROM THE LEADERS IN SGRT.

## A NEW PLATFORM, A NEW PARADIGM

AlignRT<sup>®</sup> Advance transforms the AlignRT user interface and workflow with a faster, more streamlined and intuitive experience, whilst enhancing patient safety.

From the leaders in SGRT, AlignRT Advance is the result of invaluable feedback received from hundreds of AlignRT users whilst treating thousands of cancer patients.

### A BETTER FIT WITH YOUR WORKFLOW

- Frame rates up to 3x faster providing improved real time performance
- One-click SSD reporting
- Auto-default to preferred setup option (plan or previous reference capture) and view

### STREAMLINED PATIENT PREPARATION

- Auto-alert for new or replanned patients
- Auto-patient creation when plan sent from treatment planning system
- Streamlined import of plan to intuitive patient planning structure

### MORE FLEXIBLE TREATMENT MANAGEMENT

- Option to change to any surface while monitoring
- Add and edit regions of interest at any time
- Improved bolus workflow

*I promise you won't ever look back! AlignRT Advance is very quick & easy to use and means treatment times are minimized. Postural Video makes patient setup and monitoring in real-time much easier.*

Kyle Woods, Lead Therapy Radiographer, Genesis Care Cambridge

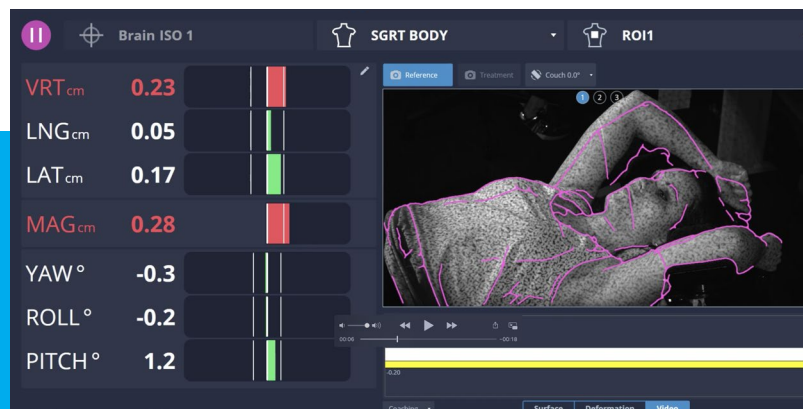


## FREEDOM TO TRY. FREEDOM TO CHOOSE.

With AlignRT<sup>®</sup> Advance, new horizons open in the field of Surface Guided Radiotherapy. Now you have the option to explore additional functionality before choosing what to purchase.

### POSTURAL VIDEO™

- Gain clear positional guidance from multiple angles during setup and monitoring
- High resolution and fast frame rate to make patient set up and correction much faster



### 3D PHOTO™ DISPLAY

- Make selecting regions for tracking easier, faster and more accurate
- Clearly identify and avoid hair, clothing, and other obstructions

